

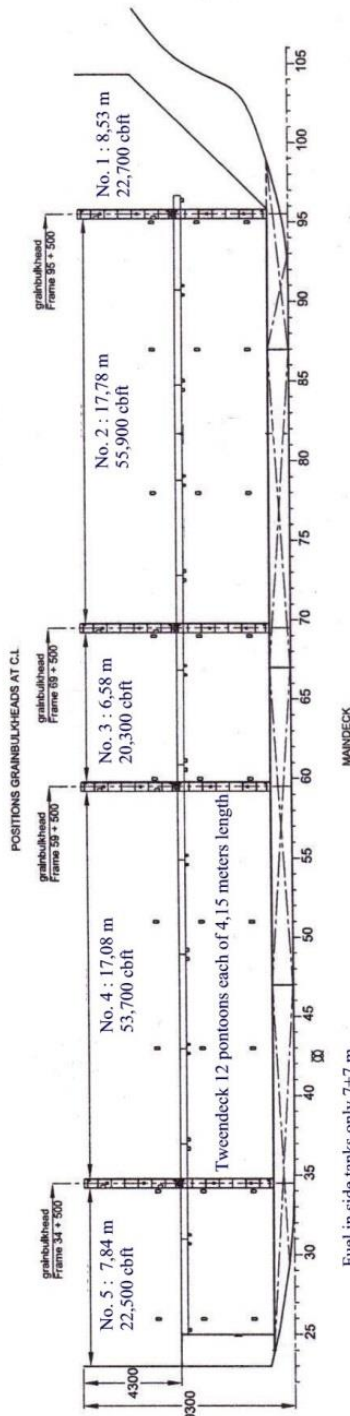
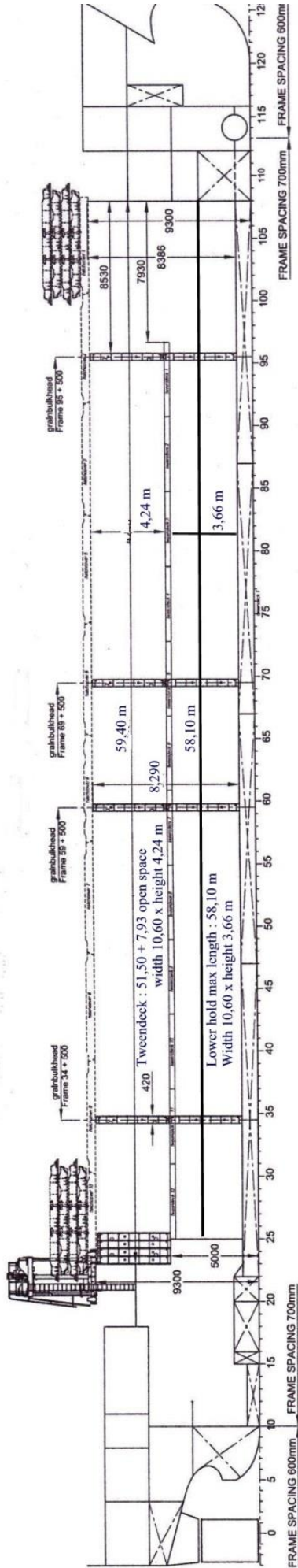


M.V. ” TINA ”

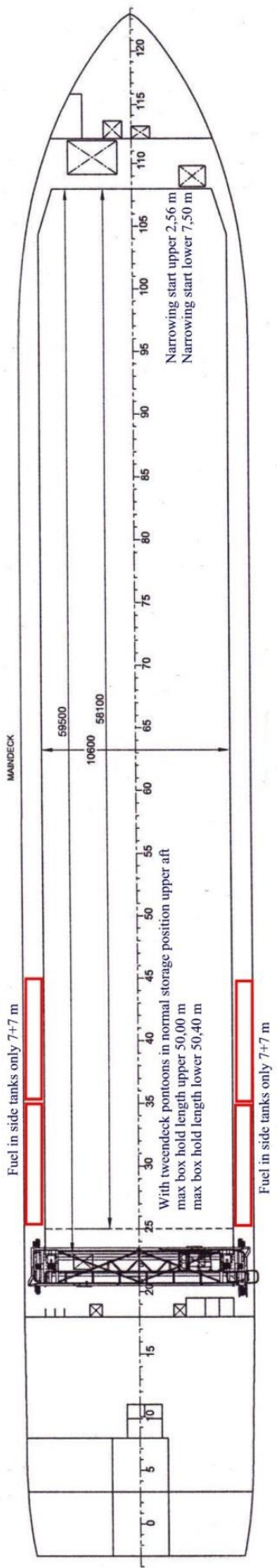
Flag	Dutch flag
Built	2008-2010
Call sign / imo number	PBYP / 9466221
Communications	Email : pbyp@globeemail.com
.....	Phone : +88 1677 714018
Type	Gearless box single/tweendecker
Class	Bureau Veritas highest, Ice Class 1 A
P + I Club.....	Standard London
Dwat	3350 mt
Dwcc summer basis 80 tons bunkers	About 3000 mt basis draft 5,40 m saltwater
Dwcc winter basis 80 tons bunkers.....	About 2900 mt basis draft 5,25 saltwater
GT/ NT	2622 / 1421
Loa/ beam	88,30 m / 12,90 m
Draft in ballast	Min 4,0 m / max 4,6 m
Draft in ice trading.....	min 4,00 m / max 5,25 m
Distance keel to antenna	About 26 meters
Distance keel to hatch coaming	About 9,30 m
Depth moulded.....	7,00 m
Cubic feet capacity: grain/bale.....	176.000 cbft
Timber cap.	Abt 5000 cbm seasoned LP
Container capacity	Hold: 105 teu or 48 feu
.....	deck : 56 teu or 28 feu
Stackweight teu/feu	Tanktop : 72/ 91,5 ts / hatch : 24 / 30,5 ts
Hatches	1 hatch 58,10 x 10,60 m
Hold	1 hold 58,10 x 10,60 x 8,29 m height
Tanktop / hatch max pressure	Tanktop 12 ts m2 / twn 2,5 ts / hatch 1,60 ts
Type of hatch	Steel pontoons, stacking by gantry crane
Bulkheads	2 movable bulkheads by tweendeck pontoons
IMO Cargo fitted	Yes, all imo cargo except class 1
Grainfitted.....	Yes
Speed/Consumption.....	Abt 10,5 knots on abt 8 ts per day ifo380
.....	In port abt 1 ts gasoil per day, also in
.....	bad weather and when maneuvering.
Bunker capacity	About 210 mtons fuel + abt 35 ts gasoil
Ballast capacity.....	About 1590 mtons
Timber fitted / Slings / Tarpaulins	Yes / yes / yes
Magnet discharge.....	No magnets
Other features :	Tweendeck 12 panels total 51,50 meters
.....	length, or in combi with bulkheads

All details are W. O. G. but believed to be correct.

mv " Tina "

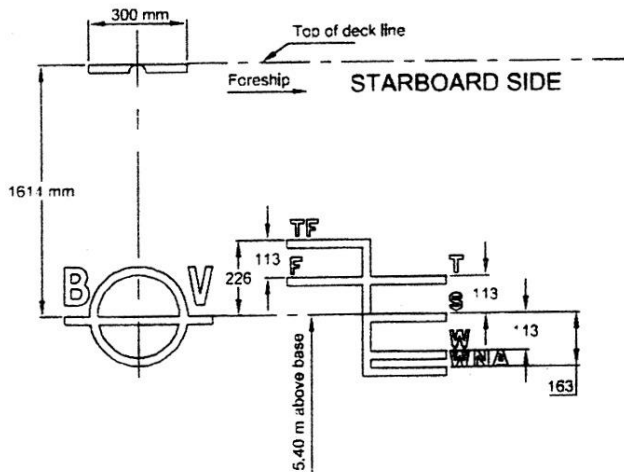


Stackweights :
 Tanktop 12,00 mts per m2
 Tweendeck 2,50 mts per m2
 Weatherdeck hatch 1,60 mts per m2



mv 'TINA'

Draft from base	Displacement sea water	Deadweight sea water	S.G.					MCT tonn/cm	Immersion ton/cm	KM m
			1.020	1.015	1.010	1.005	1.000			
5.500	5000	3500						65.00		
									10.40	
5.000	4500	3000						60.00	10.20	
									10.00	
4.500	4000	2500						55.00	9.80	
									9.60	
4.000	3500	2000						50.00	9.40	5.750
									9.20	6.000
3.500	3000	1500						45.00	9.00	6.500
									8.80	7.000
3.000	2500	1000						42.50		7.500
										8.000
2.500	2000	500						40.00		
2.000	1500	0								





Loading logs in Sweden



And taking full advantage of the highest Ice Class 1A



Supplying a Saipem unit somewhere in Atlantic



Some cargo on the tweendeck



Pontoons stacked aft



Some tanks on deck.